

**Super-thin alignment scissor
lift with jack
LG8000MG
Operation Manual**



1. Purpose.....	1
2. Main functional specifications.....	1
3. Structures.....	2-3
4. Installation	3-5
5. Adjustable.....	5-7
6. Operating methods.....	7-8
7. Operation and usage information.....	8
8. Security check.....	9
9. Problems and Solutions.....	10
10. Warranty conditions.....	11

Attach: Equipment packing list and diagrams

Product Qualification Certificate

Product name:_____

Product model:_____

Manufacturing code:_____

Shipment date:_____

Quality inspector:_____

The inspection of product accords with standard, is conforming product.

Product Guarantee Card

User's unit	
Address and telephone	
Equipment name and model	
Shipment No.	
Shipment date	
Specification for using the guarantee card	<p>Dear users:</p> <p>Thank you for using the machine produced by our company, in order to make you safely use the product for a long time, you should let professional to follow the specification and instructions to use and maintain the machine. You can get the following service according to our guarantee card and invoice.</p> <ol style="list-style-type: none">1. guarantee scope: from the date you buy our products, the problems caused by following the instructions to use it.2. guarantee period: one year3. don't belong to the guarantee range: the damage caused by man-made due to transportation, improper use, insufficient foundation strength, the power is not in conformity with the stipulations. The components which are easy to damage(electrical appliances, rubber pad, slider, steel cable and so on.
Repair records	

1、 Purpose:

Super-thin alignment scissor lift with jack good stability, high precision, suitable for 3.5T or below the light car proceed four wheel aligner、 maintenance and debugging.

2、 Main functional specifications:

Lifting capacity	≤3.5T
Lifting height	Firstly floor : 66"/1670mm
	Secondly height : 18"/460mm
Lifting time for large scissor lift	20 ~30 Seconds
Lifting time for jack	20 ~30 Seconds
Down time	20~30 Seconds
Min height	180mm
Platform length	4500mm
Power	3KW
Motor	<input type="checkbox"/> Three phase: 380V/50Hz <input type="checkbox"/> Single phase: 220V/50Hz
Used Air pressure	4~8Kg/Cm ²
Hydraulic oil	15L 46#Anti-wear hydraulic oil (The new machine use after 3 months replacement, normal use change once a year)

3、 Structures:

Super thin alignment scissor lift with jack, Ultra-thin design for easy on ground mounting. From the chassis, scissor arm, machine, fuel tank, starting claw, power unit and insurance agencies and other components.

Lower parent shearing operation, tighten electric control cabinet machine conversion button to the machine position, by the control cabinet up button control, so that the motor drive gear pump, the hydraulic oil tank through the gear pump input cylinder. Under the action of hydraulic pressure, the piston rod extends and drives the scissor arm and worktop to climb up synchronously to achieve the purpose of lifting, reaching the working height, controlling by the self-locking button, locking the insurance rack and completing the lifting operation.

Lower mother cut operation by the control cabinet descent button control, when the hold down button, the time relay to control the motor, the lift will rise some distance, and at the same time make the solenoid valve control safety cylinder open, the lift up Self-locking rack, under the action of the workbench, hydraulic oil in the cylinder through the oil return line, discharged back to the tank, lift the lowest position down to complete the lift

Working.

The upper sub-shear operation, the same principle with the lower rise of the mother of the same operation, twist the electric control cabinet mother switch button to the sub-machine position, the control cabinet down button control.

4、Installation

Install the car lift personnel must go through professional car lift training, obtain the operator qualification certificate.

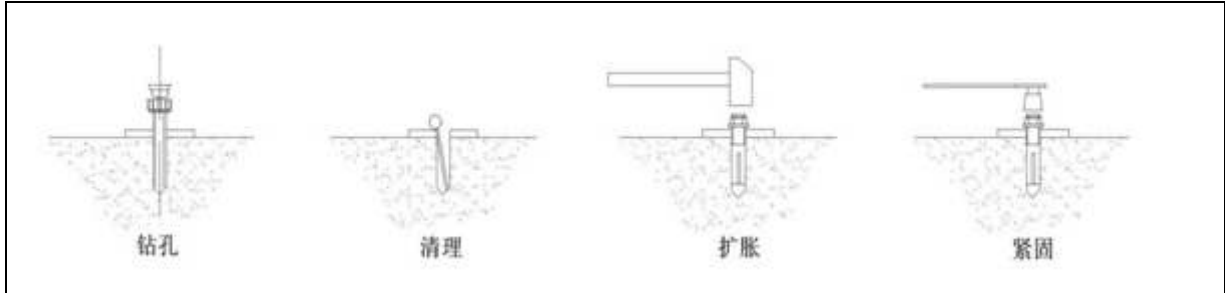
Before installing the machine, please carefully read the instruction manual, understand the structure and principle of the machine, check whether the machine is damaged in the process of loading and unloading, whether there are any missing parts in the spare parts inspection, and if there are any gaps, you must contact the dealer or the manufacturer immediately. In the case of missing parts, but also the installation of the machine, manufacturers and distributors are not responsible.

According to equipment packing list to check all the accessories are complete, and then follow the steps below.

- 1) Check the ground lift installation of the ground should meet the requirements of the drawings, the concrete thickness should be greater than 200mm. Foundation flatness error of not more than 5mm, four sides error of not more than 10 mm.
- 2) First determine the direction of the machine (the work surface has a groove that is placed in the direction of the cover is the direction of the front) and the main machine should be placed on the location.
- 3) Put the scissor lift oil cylinder connect to the oil pipe and air pipe and then open, after threading it to the power cabinet power unit.
- 4) Connect the main and auxiliary tubing and trachea, the main and auxiliary into the appropriate location and display well. Open the fuel tank cap and fill the fuel tank with about 46 # hydraulic oil of about 15 liters to connect the external power supply (Please prepare the hydraulic oil) .
- 5) Open (clockwise) power control cabinet power switch, connect the power supply, power control cabinet power light. Press the rising button to check whether the direction of motor rotation is counterclockwise and counterclockwise is the correct direction. If the direction of rotation of the motor is reversed, just adjust the two lines of the local machine (Note: the zero line can not be changed when adjusting the line, otherwise the local control system may be burned out). After normal, turn off the power.
- 6) Turn on the air supply, open the cover of the electric cabinet, screw the adjusting switch to the working position, turn on the power, the power light will be bright, hit the double twist switch to the mother machine, turn off the fill oil switch, press the up button, To a certain height (for people to work in the trench), press the lock button to lock the host.
- 7) Turn the adjustment switch to the adjustment position, open the female shear fill oil switch, press the lifting button, so that the auxiliary machine rises to the same level with the host (the insurance pawl stuck in the same level of teeth), the adjustment switch to work position, press the Automatic locking button to lock the auxiliary machine, close the mother cutout oil switch.
- 8) The lower parent clip raised above the position of the fifth latch, put the self-locking button, so that the main and auxiliary machine insurance latch locked in the same insurance card teeth, adjust the level gasket pad, adjust the distance around the front, with the impact Drill fixed 16 M16 × 150mm expansion screws, hammer into the ground expansion screw hit the core nail fastening bolt, screw preload.

9) After the completion of the above process, no-load (the insurance teeth stuck in the fourth tooth lock teeth state).

With the level of horizontal or horizontal tube detection platform level, adjust the level of screws before and after the floor so that the platform level error $\leq 5\text{mm}$. Use tape measure to check the diagonal length of the platform, the length error $\leq 5\text{mm}$. Then pre-tighten the expansion of the screws, and then fine tune the level of primary and secondary machine table. At this point, the machine is installed.



Expansion screw installation method

No.1 turn hole, No.2 clean, No.3 expand, No. 4 fixed.

5、Adjustable:

After the machine is installed, the main machine and auxiliary machine can not rise and fall at the same time or workbench imbalance mostly due to the amount of oil and air.

1) Master cut the main machine synchronization work adjustment methods

- A. panel twisting switch screwed to the mother machine position, adjust the switch inside the box to work position, turn off the oil switch, press the up button, the host up to the maximum height.
- B. Press the up button to make the auxiliary machine rise to the maximum height, then press the self-locking button to make the auxiliary machine descend to the lowest position (this action is repeated 3 ~ 4 times). After that, make the auxiliary machine and the main machine at the same height (the error is less than 3mm).
- C. Press the up button to make the auxiliary machine rise to the maximum height, then press the self-locking button to make the auxiliary machine descend to the lowest position (this action is repeated 3 ~ 4 times). After that, make the auxiliary machine and the main machine at the same height (the error is less than 3mm).
- D. When the mainframe is in the lowest position, the top of the main and auxiliary machine surface adjustment bolts should be close to the bottom of the mother machine, and the nuts should be used to lock the main and auxiliary machine surface adjustment bolts. At this point, the main clipper master and slave synchronization work is completed.2)

Sub-main master synchronization work adjustment method

- A. Panel twisting switch screwed to the sub-machine position, the box to adjust the switch to the working position, turn off the oil switch, press the up button, the host up to the maximum height.
- B. Turn the adjustment switch inside the box to adjust the position, open the sub-cutout fill oil switch.
- C. Press the up button, so that the auxiliary machine rose to the maximum height, then press the self-locking button, so that the auxiliary machine down to the lowest position (this action repeated 3 to 4 times). After that, make the auxiliary machine and the main machine at the same height (the error is less than 2mm).
- D. Turn the adjustment switch inside the box to the working position, turn off the sub-cutout oil switch. After that, press the down button and the sub-shear host to the lowest position. At this point, sub-cut the main vice synchronization work is completed.

PS: If the lift factory after the fuel tank has been connected to the interface, you can also connect all the oil pipe first

oil switch interface, the general steps for the first cut after the child cut, so the mother and child master cylinder to operate alone exhaust As long as the switch charge switch can be.

3) Finishing, banding tubing, trachea, wires and so on.

4) When installing on the ground, set the position of the machine well and install it directly according to the above steps. After installation, you can choose to cover the oil, air pipe and electric wire with the protective cover to avoid trampling the damaged pipes and wires.

6、Operating methods:

The operator must be professionally trained and understand the operating instructions.

1) When the machine is reduced to a minimum, the car can enter directly. Make sure the vehicle is in the center of both machines. Car should be pulled up hand brake, pad good sponge pad, sponge pad placement must be recommended by the location of the vehicle manufacturers.

2) Change to the main machine or sub-machine button, press the up button, so that the machine rose to leave the ground a little. Release the ascent button and double-check that the vehicle's position is synchronized with both panels in the center.

3) Continue to press the UP button to raise the machine to any height required for work. Release the rising button, the machine stops rising. Press the self-locking button, the machine can be lowered to the safe lock state. Again check the car is safe, staff can enter the work area operations.

4) Need to use the sub-shears lift table, press the up button, the table rises a little, according to the vehicle situation, pull out the table stretch arm. Put down and adjust the rubber bearing pad and put it under the supporting force part of the automobile. Press the rising button again. When the auxiliary shearing and lifting workbench rises close to the support part of the automobile chassis, release the button and check again whether the rubber bearing pad With the provisions of the car supporting the force part of the match, the rubber bearing pad placed in position, the vehicle position and the two panels are synchronized. Can continue to use the lift. So that the machine rose to any height required for work, press the self-locking button, the machine can be lowered to the state of insurance lock. Again check the car is safe, staff can enter the work area operations.

PS: In the process of ascension, it is necessary to ensure that the balance of the vehicle is steadily increasing at all times. If it is found that the main and auxiliary machines are not asynchronously ascending to cause the vehicle to tilt, immediately release the ascent button to stop lifting and take safety measures to support the vehicle steadily. Ask a professional or contact the manufacturer , To be repaired before normal use.

5) When you need to lower the machine, you must clear the obstacles below and around the lift.

Screw to the machine button, press the drop button, the insurance cylinder due to open the solenoid valve open and bounce, lift the insurance card cover from the self-locking rack state, the lift dropped to the bottom position.

Screw to the sub-machine button, press the drop button, the same principle and the machine down. Before the lowest drop should be

Push the arm to the minimum position to prevent the mother clipper from jamming down to the lowest position.

PS: Decreasing process must ensure that the vehicle balance stable decline, such as the main and auxiliary equipment found asynchronously decline when the vehicle tilts, should immediately release the descent handle to stop and take safety measures to support the vehicle firm, to find a professional or contact the manufacturer , To be repaired before normal use.

6) To exit the car, you should first sub-scissors workbench down to the lowest before the mother cut the workbench to

the lowest bit, and then exit the car.

7、 Operation and usage information:

When the car is being raised for repair work, first check whether the safety gear of the lift is locked and the vehicle is balanced and stable. Must be locked in the safety teeth before they can carry out vehicle maintenance, commissioning operations.

- 1) Lifts in the process of descent, the machine can not be blocked by a pit to prevent the machine down, the pit can not accumulate water, plot oil, keep the pit clean.
- 2) Prohibit overload work, when the sound is abnormal or can not start, should stop working to identify the cause, troubleshooting, can continue to use.
- 3) Regularly fill the grease filling area with grease.
- 4) Lift the use of the process, it is strictly prohibited to open the oil fill switch and the tank to adjust the switch to debug the machine.

8、 Security check:

Safety inspection is an important measure to ensure the normal use of the lift. It must be inspected at least once a month to find abnormalities and must be discontinued until it is completely repaired.

1) Security check:

A, check the safety of tooth tips and rack wear

B, check the hydraulic cylinder, tubing and tubing interface leakage situation

C, check the cylinder, trachea and valve for leaks and damage

D, check the bearing shaft, hole wear

E, whether the shaft end retainer shedding, shaft displacement or loss phenomenon 2) Repair check:

A、 Support shaft is bent, wear and tear deformation, and should be appropriate to add the appropriate amount of lubricant

B, roller, roller shaft is worn, each hole heart wear becomes larger

C, the welding parts are desoldering, cracking

D, whether the distortion of the bracket, the roof is deformed, sliding plate homing is good

E, check whether the deterioration of hydraulic oil, oil is sufficient,

F, check the electrical components are reliable, the line is loose or aging

G, the car up, down process, with or without abnormal sound, (after the increase in the safety tooth structure is not locked state, the machine with or without natural decline phenomenon)

9、 Problems and Solutions:

Problems	Reasons of the problems	Solutions
The electric motor isn't running	Poor connection of electric wire	Check and well connect the wire
	Damage in electrical apparatus element	Check and repair or replace it
	Damage in electric motor	Repair or replace the electric motor
The electric motor is running but the carriage isn't ascending	Motor reversal	Change the way of wire connection
	The Overflow valve is always open	Readjust the oil pressure or solve the overflow valve problem
	Damage in gear pump	Change the gear pump to a new one
	Hydraulic oil is not enough	Add hydraulic oil
	Damage in solenoid valve	Repair or replace the exchange valve

	The entrance of oil pump sucked in air	Reassemble the imported connector
Slow descending after ascending	Oil leakage in pipeline	Screw the interface of pipeline or change it
	Bad sealing in hydraulic cylinder	Replace the seal components
	Bad sealing in single valve and solenoid valve	Replace the single valve or seal components of solenoid valve
Slow ascending	Blockage in oil filter	Clean the oil screen or change the hydraulic oil
	Serious worn in oil pump	Replace the oil pump
	Hydraulic oil become heat	Change the oil type
	Rotation speed of motor become lower	Repair or replace the electric motor
Slow falling or it does not fall at all	Didn't turn on the safe cog	Whether the air cylinder travel is high enough
	Didn't turn on the gas circuit	Check the air pressure, air pipe and air valve to find out whether they are folded, blocked or damaged
	Improper adjustment in descending flow valve	Readjust the descending speed
	Damage in descending solenoid valve	Replace the solenoid valve
Deviation in platform standard	Leak pressure in oil cylinder	Replace the seal components
	Poor close in adjustment of oil line	Change the adjustment valve of oil line
	Platform happen to move	Readjust the platform level
dissynchronous in lifting between the two scissors	Air in the oil cylinder	Re-dry out the air
	Poor close in adjustment valve	Replace the adjusting valve to cut off spool valve

10、Warranty conditions

1) Warranty period of one year. (From the installation date)

2) The scope of warranty: due to manufacturer's fault, bad parts to be repaired free of charge. Tracheal caused by non-human damage.

3) Any damage caused by improper use, improper repair caused by improper repair, damage caused by non-manufacturer responsibility, wearing parts are not covered by the warranty.

4) The manual, warranty card and related information the final interpretation of the company owned.

After-sale service card

Product model		Manufacturing code		Shipment date				
User's name		User's telephone		User's address				
Problems		Analysis of the causes and treatment results						
1								
2								
3								
4								
Summary of test	Load about kg			Note				
List of components replacement	Product name and specification	Quantity	Unit price	Total price	Product name and specification	Quantity	Unit price	Total price
Start time		Finish time		ΣM				
Service date	User's opinions				Sales Dept.'s opinions			
	Signature							
Repairer's signature								
Specification	1. the form should be filled in by repairer 2. the inactive components should be taken back to our company for research and improvement 3. if it is beyond our guarantee range, the extra charge counted on the user should be filled in the ΣM line				Note			

Card of Installation acceptance

for user

Product name	Product model	Manufacturing code	Shipment date	
Installation unit	Installation personnel 's signature	Installation date	Summary of test with load	
User's name		Use's address, zip code and telephone		
Acceptor's signature		Note		
Records for adjustment of new machine(it means you install the machine without test, initial use and so on)				
No.	Date	Reasons and contents of adjustment	Implement unit and adjustment person's signature	Note

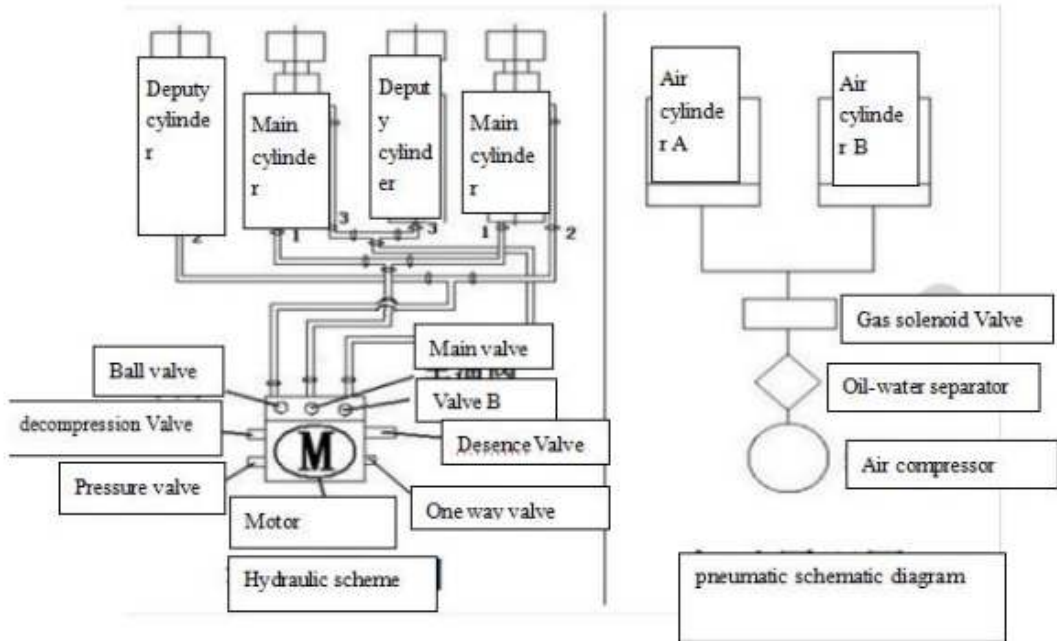
Card of Installation acceptance

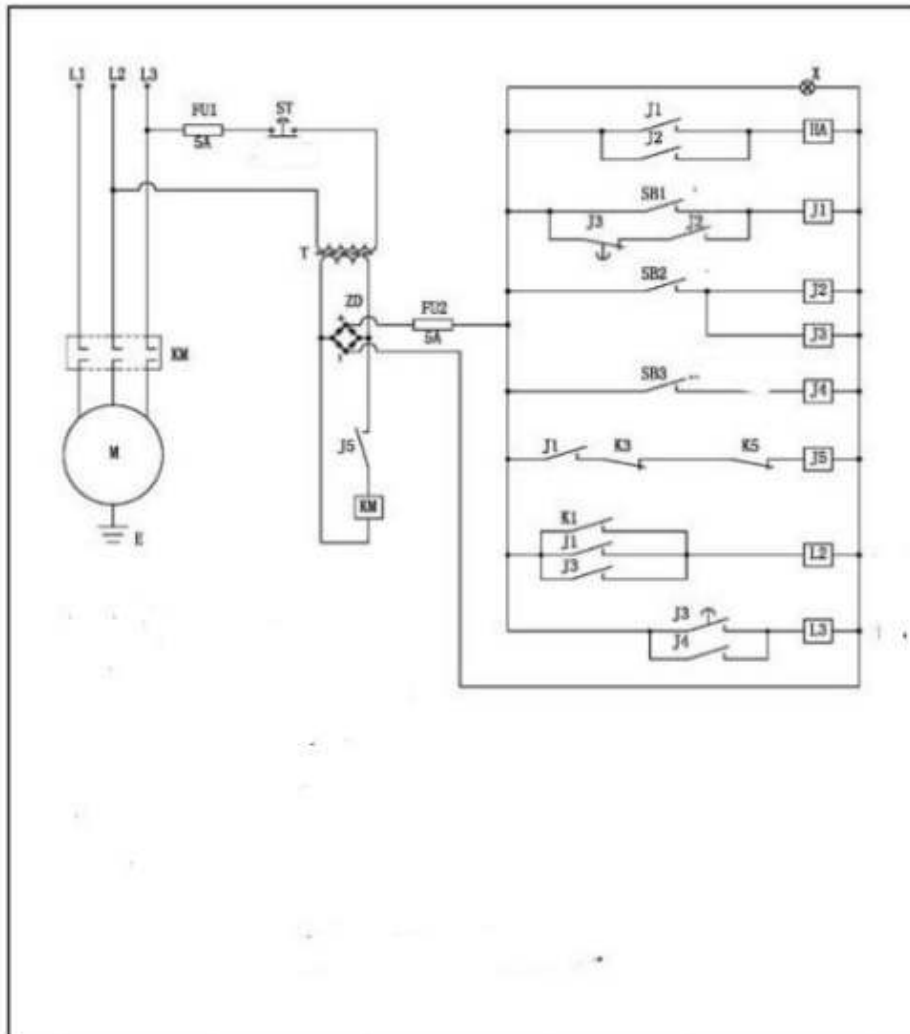
for manufacture

Product name	Product model	Manufacturing code.	Shipment date	
Installation unit	Installation personnel 's signature	Installation date	Summary of test with load	
User's name		Use's address, zip code and telephone		
Acceptor's signature		Note		
Records for adjustment of new machine(it means you install the machine without test, initial use and so on)				
No.	Date	Reasons and contents of adjustment	Implement unit and adjustment person's signature	Note

Equipment packing list

No	Name	Accessories	QTY	Remark
1	Main scissor lift		1pcs	
2	Secondly scissor lift		1pcs	
3	Control box		1pcs	
4	Pull explosion screw	M16×150	16sets	
5	Foam pad		4pcs	
6	Air pipe	Ø6	8meters	
7	Air pipe	Ø6	6meters	
8	Air pipe	Ø6 (5ring)	2rings	
9	Tracheal tee fitting	Ø6	2pcs	
10	Tracheal reducer	Ø8 turn Ø6	1pcs	
11	Trachea diameter connector	Ø6	2pcs	
12	Tracheal steel connector		1pcs	
13	Nylon cable tie	5×250	15pcs	
14	Operation manual	Scissor lift	1pcs	
15	Iron pads		1set	
16	Screw		16pcs	
17	Colloidal particles		16pcs	
18	Gasket	Ø6	16pcs	
19				
20				
21				
22				
23				





FU	Protect tube	HA	Alarming apparatus	L2	Air valve	J1,J2,J4,J5	Relay
ST	Power Switch	SB1	Up button	L3	oil return valve	J3	timer
KM	AC contactor	SB2	Descend button	K1	Up valve switch		
T	Transformer	SB3	Self-lock	K3	Emergency switch		
X	Indicator light	M	Motor	K5	Limited switch		

Electrical schematic diagram

